

Version	Date	Information Source	Update Details
1.0	11/03/2020	Dongxia Lin	Preliminary version
1.1	29/03/2020	Dongxia Lin	Update figure2
1.2	16/06/2020	Dongxia Lin	Update figure2/3/4
1.3	23/07/2020	Dongxia Lin	Update figure2/3/4 and some specifications
1.4	10/10/2020	Dongxia Lin	Add figure5(USB cable drawing)
1.5	18/10/2020	Dongxia Lin	Update the series number and Update figure4(27"/32"/37"/86" galss thickness)
1.6	12/01/2021	Dongxia Lin	Update Specifications

IX5100 Series

本文档包含 IRTOUCHSYSTEMS 专有技术信息，未经 IRTOUCHSYSTEMS 许可，不得向其他人披露全部或部分拷贝、转发或用于设计依据、生产和销售。

This document contains proprietary technical information, which is the property of the IRTOUCHSYSTEMS and shall not be disclosed to others in whole or in part, reproduced, copied, or used as the basis for design, manufacturing, or sale of apparatus without written permission of IRTOUCHSYSTEMS.

1. 规格参数 Specifications

机械规格 Mechanical Specifications

触摸物体 Input Method	手指或其他不透明物体 Finger, gloved hand, or any other opaque stylus
触摸点数 Touch points	10, 可支持定制到 36 点 10, can support customization to 36 points
书写点数 Writing points	10
技术原理 Touch Technology	红外线阻挡检测 Infrared rays interception detection, no special surface coatings
可选尺寸 Available Size	27.0"~86.0"
产品结构类型 Product Structure Type	PCBA、PCBA+挤塑管+玻璃、PCBA+挤铝可选 PCBA, PCBA+PC frame+glass and PCBA+Aluminium frame are available
产品尺寸 Dimensions	见附件I See Appendix I
触摸有效区 Touch Active Area	见附件I See Appendix I
玻璃 Glass	无玻璃或选配玻璃 No glass or optional glass
外壳材质 Shell Material	无外壳、聚碳酸酯(PC)外壳或挤铝外壳可选 No shell, Polycarbonate (PC) frame or Aluminium frame are available
有效触摸压力 Pressure Required to Trigger Touch Event	无需压力 No pressure required.

电气规格 Electrical Specifications

分辨率 Controller reported resolution	32767×32767
触摸精度 Touch accuracy	<1mm(中心区域 central area) < 1.2mm(边缘区域 edge area)
触摸物直径 Touch object diameter	≥6mm(单点 single point) ≥8mm(多点 multipoint), 15mm(间距 Spacing)
触摸输出 Output	触摸点坐标 Coordinates
校准 Calibration	无需校准或四点校准 Not required or Four-point calibration, no drift
响应时间 Response Time	5ms (单点 single point) 10ms (十点 ten points)
帧率 Rate	200Hz

供电 Power requirements	USB 供电(DC5V±5% @ 500mA) Powered by USB (DC5V±5% @ 500mA)
功耗 Power consumption	<1.5W
MTBF	100000H

接口规格 Interface Specifications

接口类型 Interface Type	USB HID
即插即用 Plug and Play	免驱 Plug and play and HID compatible
连接类型 Connector Type	Type A

环境参数 Environmental Specifications

温度 Temperature	工作温度 Operating : -20 ~ 70°C 存储温度 Storage : -40 ~ 85°C
湿度 Relative Humidity	工作 Operating : 10%-90% RH, 40°C 无凝结 non-condensing 存储 Storage : 10%-90% RH, 40°C 无凝结 non-condensing
静电防护 Electrostatic Protection	EN61000-4-2 2008 L4, B级 : 接触放电 8kV, 空气放电 15kV Per EN61000-4-2 2008: Level 4, Class B. Contact discharge 8kV, air discharge 15kV on USB connector pins
抗光性能 Ambient Light Tolerance	10°, 卤素灯(色温=2700K) : 照度 35K Lux 10°, halogen lamp (Color Temperature = 2700K) : illumination 35K Lux 10°, 阳光 : 照度 175K Lux 10°, sunlight : illumination 175K Lux
EMC	CE, FCC Class B Compatible
防护等级 Seal ability	PCBA+挤塑管+玻璃: 支持正面 IP66 PCBA+ PC frame+glass: Front IP66

软件规格 Software Specifications

固件升级 Firmware Upgradability	支持 Yes
设备类型 Device Type	Touch (with gesture support per OS) or, Mouse (Click, drag, double click, right-click)
多屏匹配 Multi-Monitor Support	手动 Manually Binding
操作系统 Operating Systems Support	Windows(xp\7\8.1\10),Linux(≥2.6),Android(≥2.6),Vxwork(≥6.5)

2. 屏幕开口区及有效区示意图 Panel Opening Area and Touch Active Area

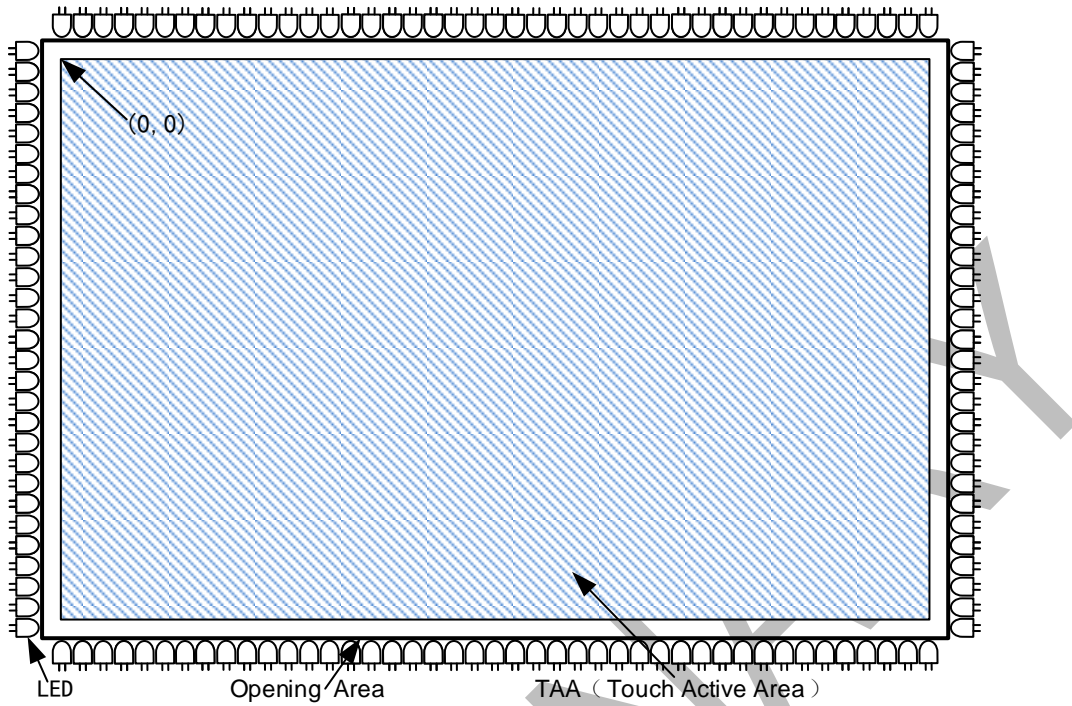


Figure 1

3. 产品尺寸图 Dimensional Drawing

Appendix I: Product Dimension Drawing

4. 符合 RoHS 认证 RoHS COMPLIANCE

IX5100 Series touchscreen is RoHS compliant.

Appendix I:

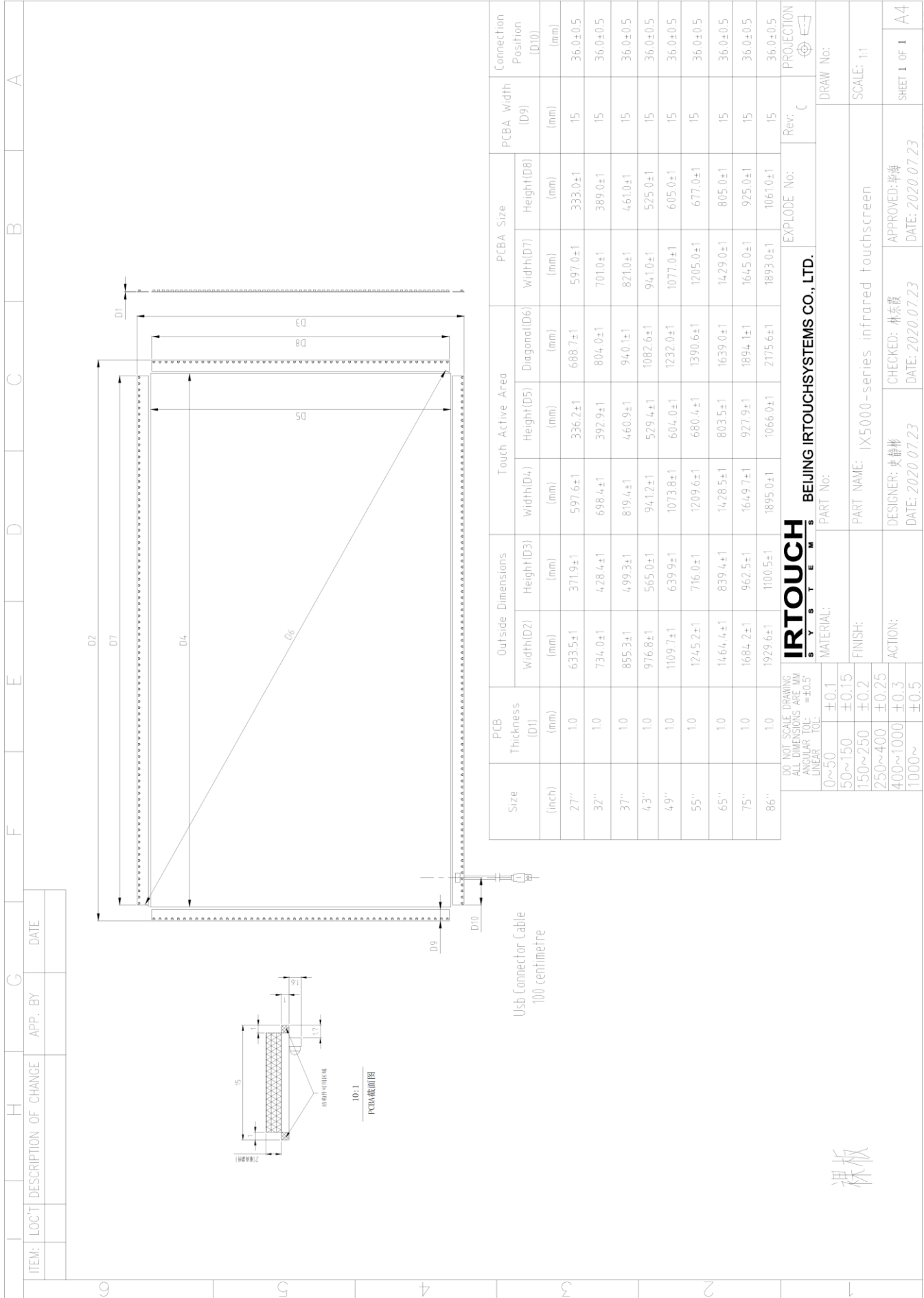


Figure 2: PCBA

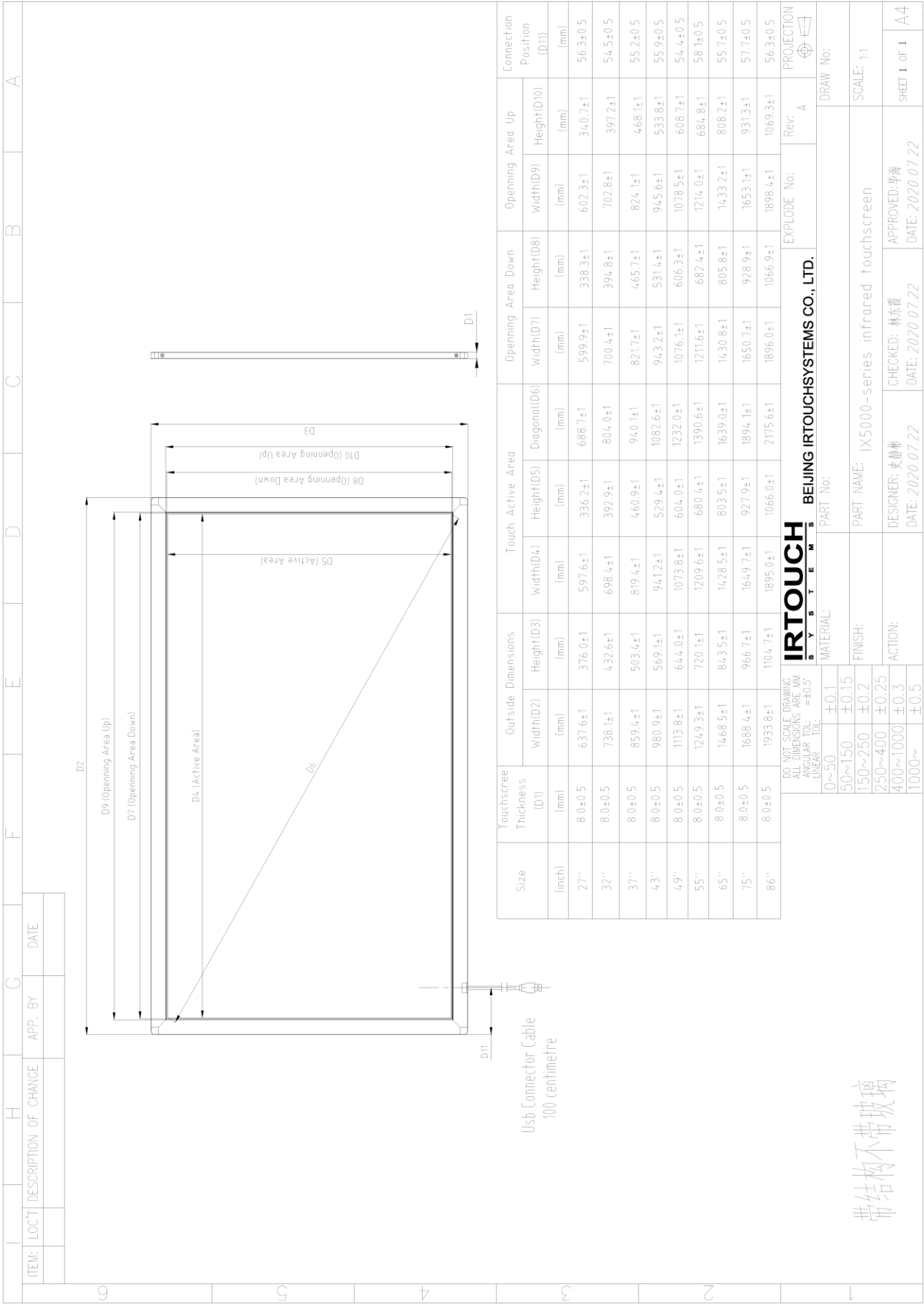
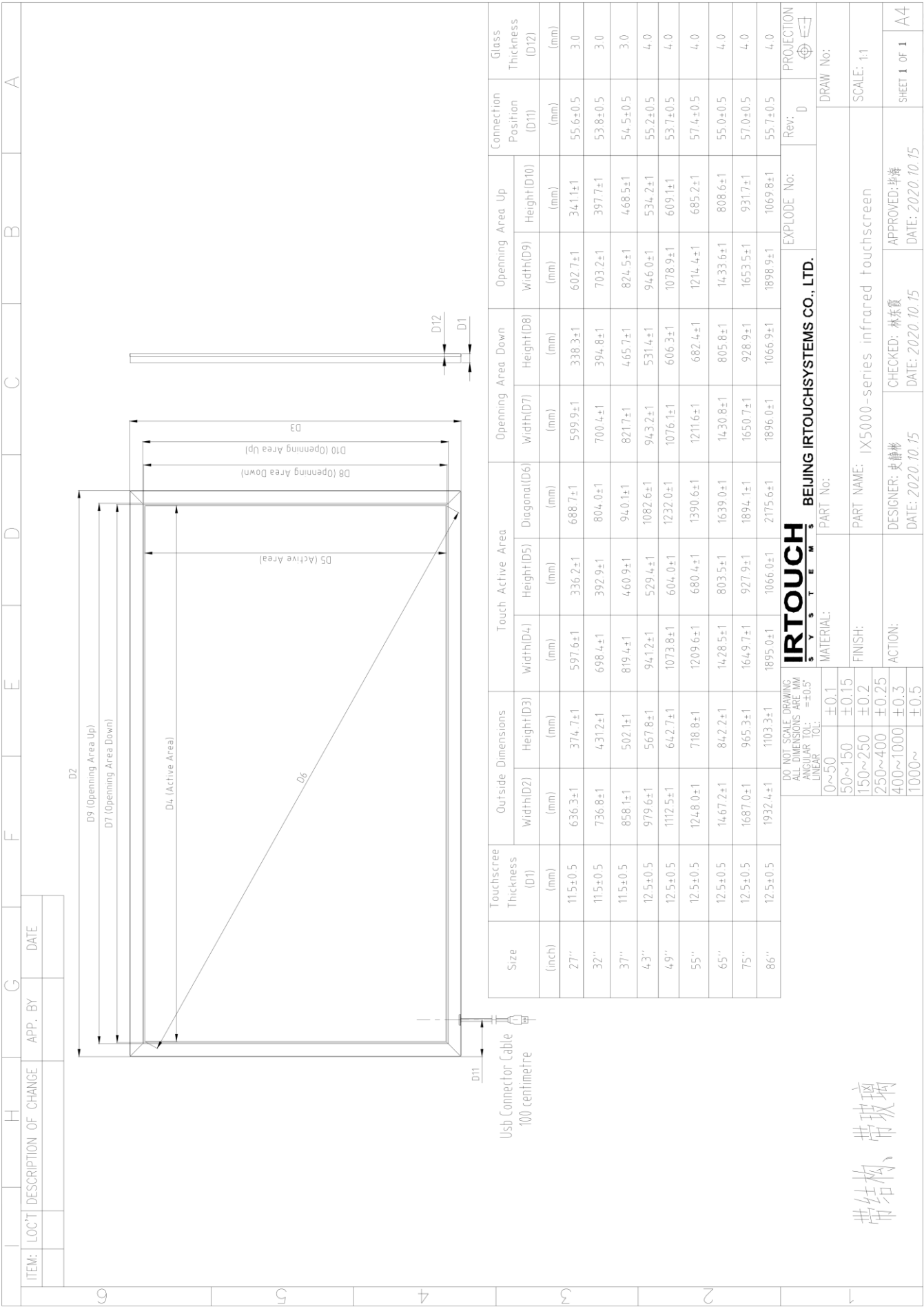


Figure 3: PCBA+ Aluminium frame



带结构, 带玻璃

DO NOT SCALE DRAWING ALL DIMENSIONS ARE IN MM ANGULAR TOL: ±0.5° LINEAR TOL:	EXPLODE No:	Rev: D	PROJECTION
0~50 ±0.1	BEIJING IRTOUCHSYSTEMS CO., LTD.	DRAW No:	
50~150 ±0.15	MATERIAL:	SCALE: 1:1	
150~250 ±0.2	FINISH:	SHEET 1 OF 1	
250~400 ±0.25	PART NAME: IX5000-series infrared touchscreen	APPROVED: 毕海	
400~1000 ±0.3	DESIGNER: 史静彬	CHECKED: 林东霞	
1000~ ±0.5	DATE: 2020.10.15	DATE: 2020.10.15	

IRTOUCH-JL-YF-32B

Figure 4: PCBA+PC frame+glass

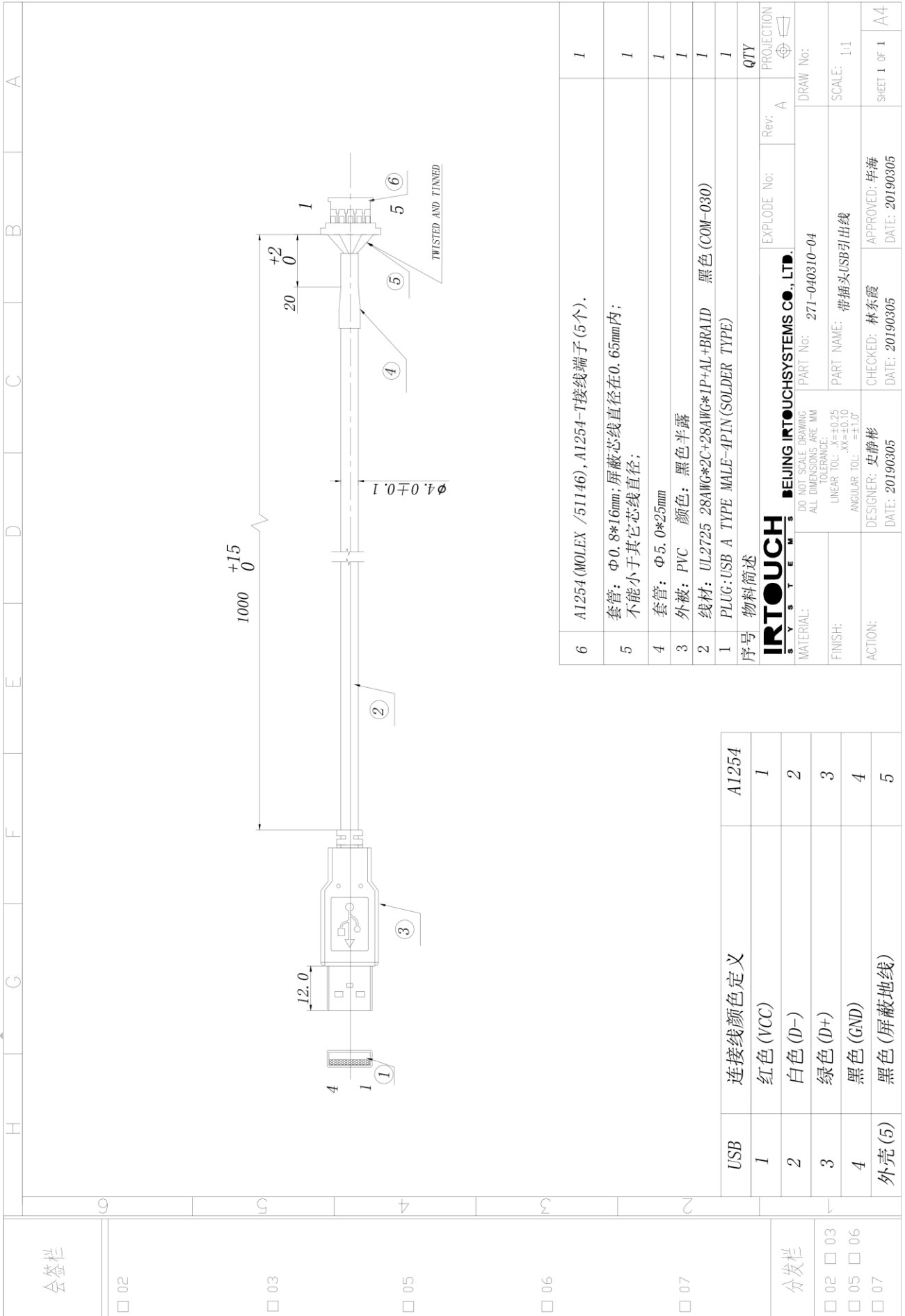


Figure 5: USB cable