

Version	Date	Information Source	Update Details
1.0	29/08/2017	Hai Bi	Preliminary version
1.1	18/12/2017	Hai Bi	Parameter modify
1.2	01/04/2019	Hai Bi	Parameter modify
1.3	29/10/2019	Dongxia Lin	Add model size
1.4	11/03/2021	Dongxia Lin	Update available size

Infrared Type Touch Panel

IX3000 Series

Technical Specification

本文档包含 IRTOUCHSYSTEMS 专有技术信息，未经 IRTOUCHSYSTEMS 许可，不得向其他人披露全部或部分拷贝、转发或用于设计依据、生产和销售。

This document contains proprietary technical information, which is the property of the IRTOUCHSYSTEMS and shall not be disclosed to others in whole or in part, reproduced, copied, or used as the basis for design, manufacturing, or sale of apparatus without written permission of IRTOUCHSYSTEMS.

1. 规格参数 Specifications

机械规格 Mechanical Specifications

触摸物体 Input Method	手指或其他不透明物体 Finger, gloved hand, or any other opaque stylus
触摸点数 Touch points	5
技术原理 Touch Technology	红外线阻挡检测 Infrared rays interception detection, no special surface coatings
可选尺寸 Available Size	10.4",15.1",17.1",21.6",23.6"
产品尺寸 Dimensions	见附件I See Appendix I
触摸有效区 Touch Active Area	见附件I See Appendix I
玻璃 Glass	3mm 钢化玻璃 (可定制) 3mm tempered glass (customizable)
透光率 Transmittance	≥88% with glass
外壳材质 Shell Material	上壳 Top Shell : 聚碳酸酯(PC)Polycarbonate (PC) 下壳 Bottom Shell : 铝型材 Aluminum Extrusion
有效触摸压力 Pressure Required to Trigger Touch Event	无需压力 No pressure required.

电气规格 Electrical Specifications

分辨率 Controller reported resolution	32767×32767
触摸精度 Touch accuracy	<1mm(中心区域 central area) < 2mm(边缘区域 edge area)
触摸物直径 Touch object diameter	≥7mm(单点 single point) ≥9mm(多点 multipoint)
触摸输出 Output	触摸点坐标 Coordinates
校准 Calibration	无需校准或四点校准 Not required or Four-point calibration, no drift
响应时间 Response Time	≥10ms
供电 Power requirements	USB 供电(DC5V±5% @ 500mA) Powered by USB (DC5V±5% @ 500mA)
功耗 Power consumption	<1.5W
MTBF	61000H

接口规格 Interface Specifications

接口类型 Interface Type	USB HID
即插即用 Plug and Play	免驱 Plug and play and HID compatible
连接类型 Connector Type	Type A

环境参数 Environmental Specifications

温度 Temperature	工作温度 Operating : -20 ~ 70°C 存储温度 Storage : -40 ~ 85°C
湿度 Relative Humidity	工作 Operating : 10%-90% RH, 40°C 无凝结 non-condensing 存储 Storage : 10%-90% RH, 40°C 无凝结 non-condensing
静电防护 Electrostatic Protection	EN61000-4-2 2008 : L4 , B 级 : 接触放电 8kV , 空气放电 15kV EN61000-4-2 2008: Level 4, Class B. Contact discharge 8kV, air discharge 15kV on USB connector pins
抗光性能 Ambient Light Tolerance	10°, 卤素灯(色温=2700K) : 照度 20k Lux 10°, halogen lamp (Color Temperature = 2700K) : illumination 20k Lux 10°, 阳光 : 照度 150k Lux 10°, sunlight : illumination 150k Lux
EMC	CE, FCC Class B Compatible
防护等级 Seal ability	正面 IP65 IP65(Front)

软件规格 Software Specifications

固件升级 Firmware Upgradability	支持 Yes
设备类型 Device Type	触摸模式 Touch (with gesture support per OS) 鼠标模式 Mouse (Click, drag, double click, right-click)
校准 Calibration	四点校准 , 无漂移 Four-point calibration, no drift
多屏匹配 Multi-Monitor Support	手动 Manually Binding
操作系统 Operating Systems Support	Windows(xp\7\8.1\10),Linux(≥2.6),Android(≥2.6),Vxwork(≥6.5)

2. 屏幕开口区及有效区示意图 Panel Opening Area and Touch Active Area

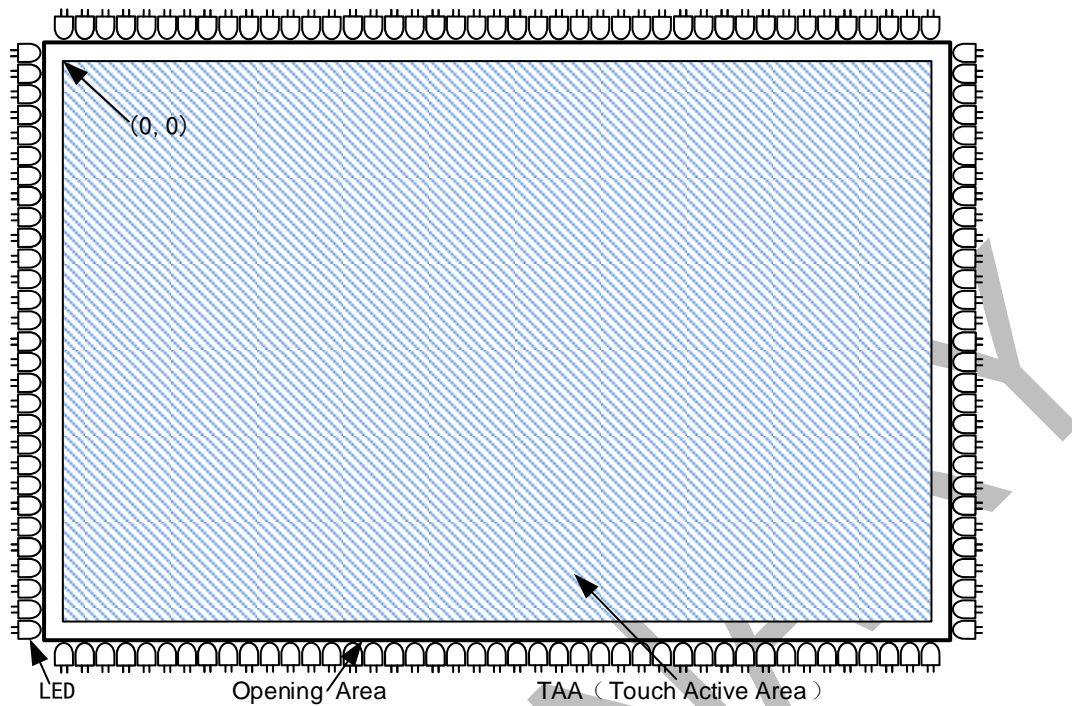


FIGURE 1

3. 产品尺寸图 Dimensional Drawing

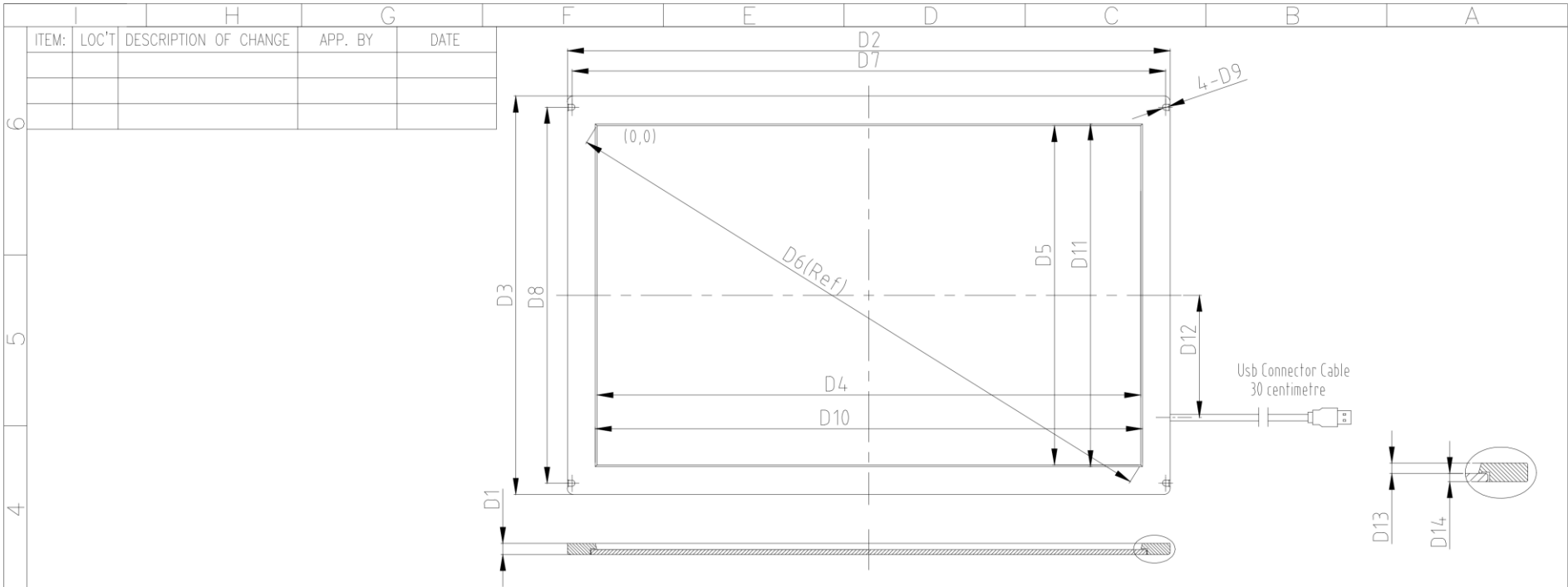
附件1 Appendix I: 产品尺寸图 Product Dimension Drawing

附件2 Appendix II: USB 引出线图 USB Connector Drawing

4. 符合 RoHS 认证 RoHS COMPLIANCE

IX3000系列触摸屏符合RoHS认证。

IX3000 Series touchscreen is RoHS compliant.

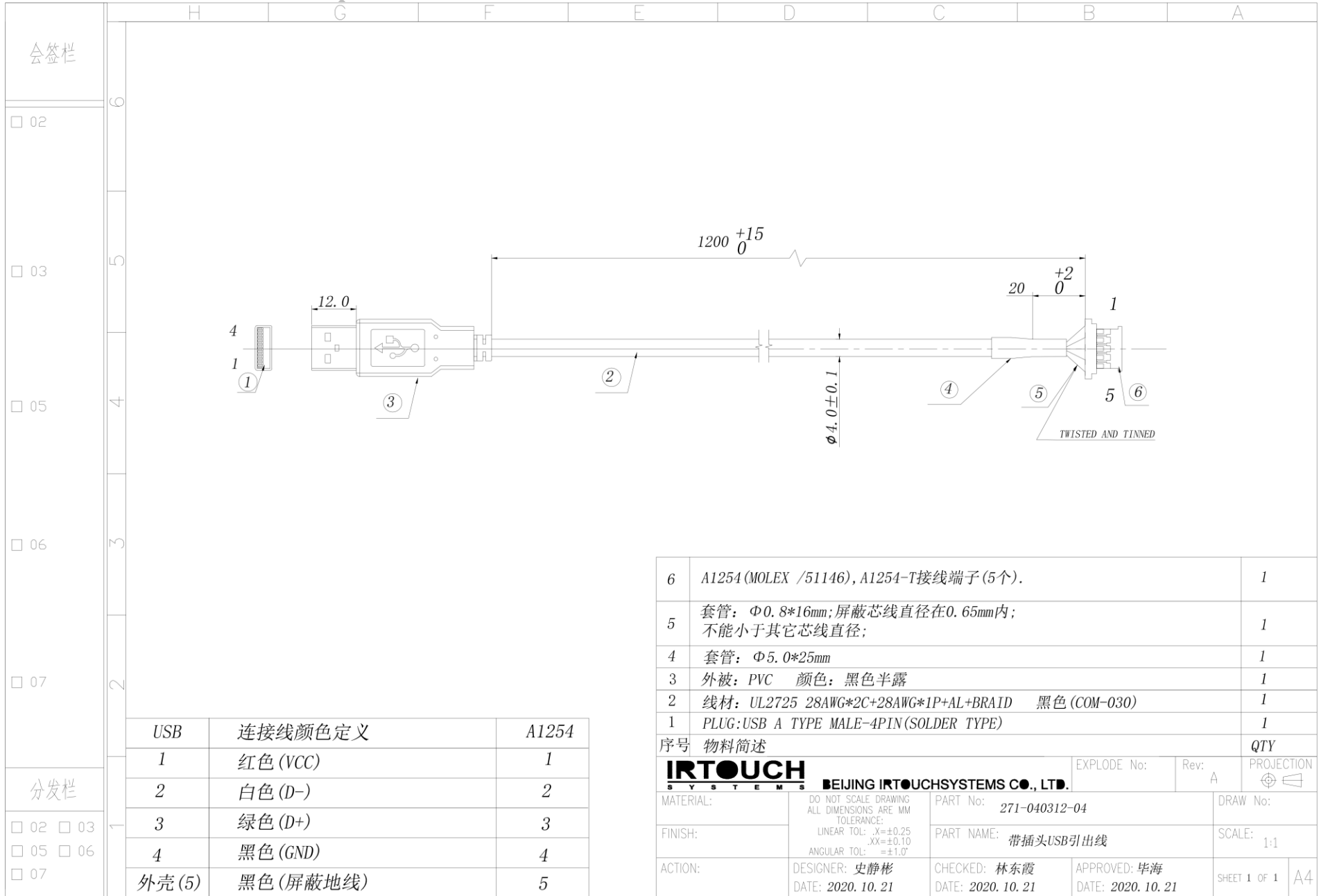


Size	Touchscre Thickness (D1)	Outside Dimensions		Touch Active Area			Assemble Hole Dimensions					Connection Position (D12)	Lens Thickness (D13)	Glass Thickness (D14)
		Width(D2)	Height(D3)	Width(D4)	Height(D5)	Diagonal(D6)	Width(D7)	Height(D8)	Diameter(D9)	Width(D10)	Height(D11)			
(inch)	(mm)	(mm)	(mm)	(mm)	(mm)	(mm)	(mm)	(mm)	(mm)	(mm)	(mm)	(mm)	(mm)	(mm)
10.4(4.3)	6.8±0.5	246.2±1	193.4±1	211.2±1	158.4±1	264±0.25	240±1	177.8±1	φ3.6±0.1	213.2±1	160.4±1	65±3	3.8±0.1	3.2±0.1
15.1(4.3)	6.8±0.5	342±1	266±1	306±1	230±1	382.8±0.25	335.8±1	250.3±1	φ3.6±0.1	308±1	232±1	100±3	3.8±0.1	3.2±0.1
17.1(5.4)	6.8±0.5	376±1	308±1	340±1	272±1	435.4±0.3	370.4±1	294.3±1	φ3.6±0.1	342±1	274±1	107±3	3.8±0.1	3.2±0.1
21.6(16.9)	8.0±0.5	517.5±1	309±1	477.5±1	269±1	548.1±0.3	508.5±1	297±1	φ3.5±0.1	480.1±1	271.6±1	100±3	4.9±0.1	3.2±0.1
23.6(16.9)	8.0±0.5	563.3±1	335.3±1	523.3±1	295.3±1	600.9±0.3	554±1	326±1	φ3.5±0.1	525.9±1	297.9±1	100±0.15	4.9±0.1	3.2±0.1

DO NOT SCALE DRAWING ALL DIMENSIONS ARE MM ANGULAR TOL: =±0.5° LINEAR TOL:	
0~50	±0.1
50~150	±0.15
150~250	±0.2
250~400	±0.25
400~1000	±0.3
1000~	±0.5

IRTOUCH SYSTEMS		EXPLODE No:		Rev: A		PROJECTION	
BEIJING IRTOUCHSYSTEMS CO., LTD.				DRAW No:			
MATERIAL:		PART No:		SCALE: 1:1			
FINISH:		PART NAME: IX3000-series infrared touchscreen				SHEET 1 OF 1	
ACTION:		DESIGNER: 史静彬	CHECKED: 林东霞	APPROVED: 毕海	DATE: 2021.03.11		A4
		DATE: 2021.03.11	DATE: 2021.03.11	DATE: 2021.03.11			

IRTOUCH-JL-YF-32B



6	A1254 (MOLEX /51146), A1254-T接线端子 (5个).	1
5	套管: $\Phi 0.8 \times 16\text{mm}$; 屏蔽芯线直径在0.65mm内; 不能小于其它芯线直径;	1
4	套管: $\Phi 5.0 \times 25\text{mm}$	1
3	外被: PVC 颜色: 黑色半露	1
2	线材: UL2725 28AWG*2C+28AWG*1P+AL+BRAID 黑色 (COM-030)	1
1	PLUG:USB A TYPE MALE-4PIN(SOLDER TYPE)	1
序号	物料简述	QTY
IRTOUCH SYSTEMS BEIJING IRTOUCHSYSTEMS CO., LTD.		EXPLODE No:
DO NOT SCALE DRAWING ALL DIMENSIONS ARE MM TOLERANCE: LINEAR TOL: .X= ± 0.25 .XX= ± 0.10 ANGULAR TOL: = $\pm 1.0^\circ$		Rev: A
MATERIAL:	PART No: 271-040312-04	PROJECTION
FINISH:	PART NAME: 带插头USB引出线	DRAW No:
ACTION:	DESIGNER: 史静彬 DATE: 2020.10.21	CHECKED: 林东霞 DATE: 2020.10.21
	APPROVED: 毕海 DATE: 2020.10.21	SCALE: 1:1
		SHEET 1 OF 1
		A4

USB	连接线颜色定义	A1254
1	红色 (VCC)	1
2	白色 (D-)	2
3	绿色 (D+)	3
4	黑色 (GND)	4
外壳 (5)	黑色 (屏蔽地线)	5